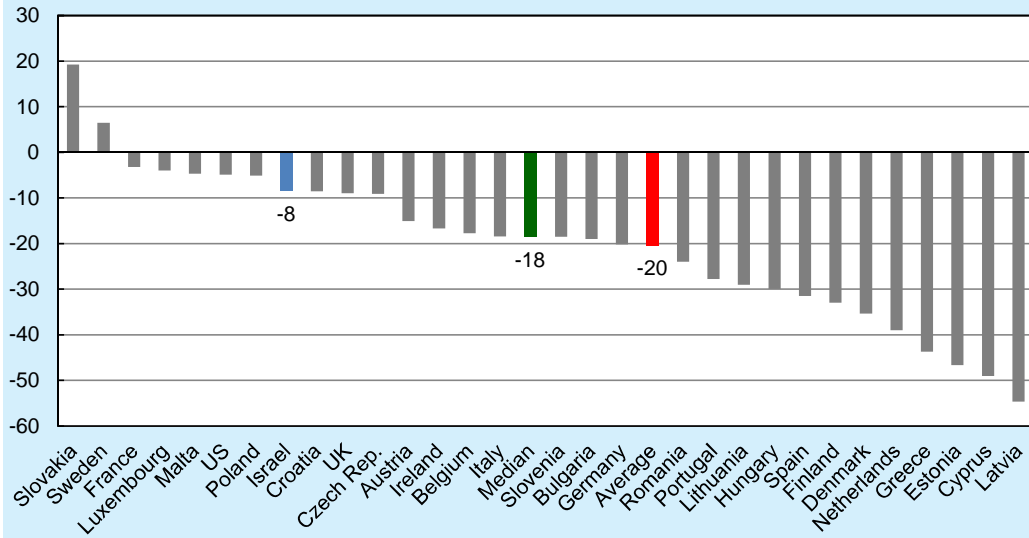


Branches are closing in Israel at a slower pace than in the EU or the US.

Figure 1.11

Rate of Change in the Number of Bank Branches^a, Israel, EU and US, 2011–17^b

(percent)



^a Excluding activity abroad.

^b In the UK, calculated as the rate of change between 2011 and 2014.

SOURCE: Europe—European Central Bank; US—FDIC; Israel—Based on reports to the Banking Supervision Department.